



ORGANIC TRANSITION PROCESS

OHIO ORGANIC GRAINS CONFERENCE

FULTON COUNTY EXTENSION

JANUARY 2023

WHO'S IN THE ROOM?



ORGANIC TRANSITION PROCESS

- **GETTING STARTED**
- **NUTS AND BOLTS**
- **HELP AND RESOURCES**



GETTING STARTED

1) WHAT DO I NEED
TO DO?



TRANSITION PLANNING

- BUILD A RELATIONSHIP WITH A CERTIFIER
- FIND A MENTOR!
- FIND YOUR COMMUNITY!
- STUDY THE ORGANIC STANDARDS
- DEVELOP A RECORDKEEPING SYSTEM
- MAKE A TRANSITION PLAN



STARTING TO PLAN FOR TRANSITION



Last date a Prohibited
Substance was applied

3 YEAR TRANSITION
PERIOD



PRIOR LAND USE INFORMATION



ADJOINING LAND USE AND BUFFERS



CULTURAL, MECHANICAL, BIOLOGICAL CONTROLS



APPROVED INPUTS



RECORDS



COSTS AND BENEFITS

ORGANIC CERTIFICATION PROCESS

- 1) ORGANIC SYSTEM PLAN & PAYMENT
- 2) PRE-INSPECTION REVIEW
- 3) INSPECTION
- 4) POST-INSPECTION REVIEW
- 5) CERTIFICATION DECISION



ORGANIC CERTIFICATION PROCESS

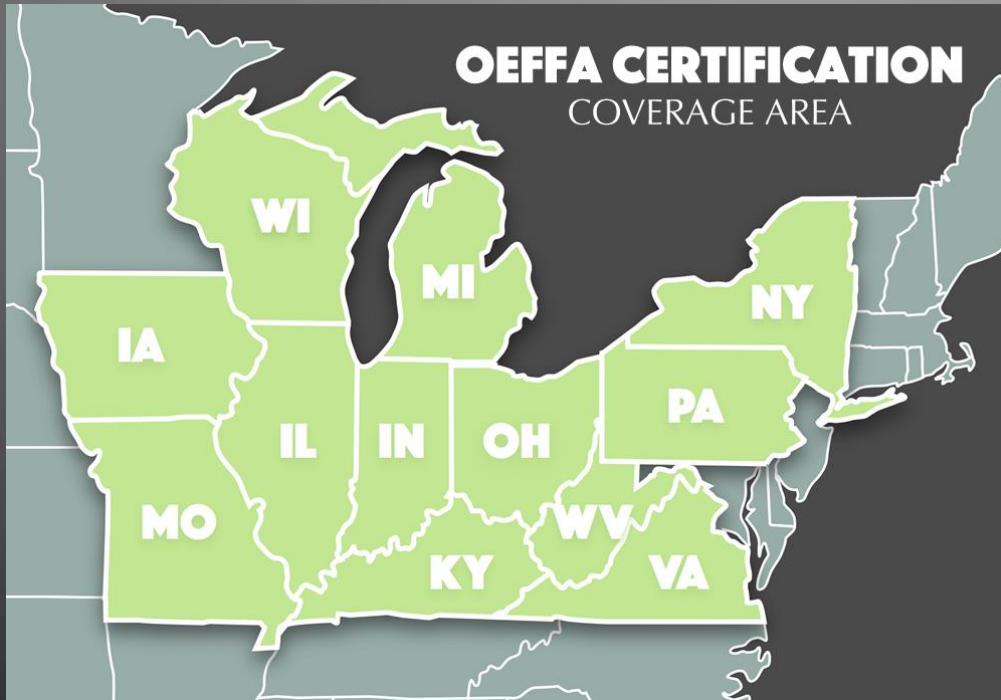


■ PROCESS AS A PARTNERSHIP!

- PRODUCERS
- INSPECTORS
- CERTIFIERS
- RESOURCE PROVIDERS
- OSU EXTENSION
- NRCS
- FSA
- INPUT DEALERS
- OTHERS...

2) HOW MUCH
DOES IT COST?

COST OF CERTIFICATION



CROP: \$1275

**\$775 AFTER
REIMBURSEMENT**

LIVESTOCK: \$400

**\$200 AFTER
REIMBURSEMENT**

**HANDLING: BASED ON
GROSS ORGANIC SALES**

COST SHARE

**50% UP TO \$500
PER SCOPE**



NUTS AND BOLTS

3) WHAT INPUTS
CAN I USE?

A red tractor is visible on the left side of the image, parked in a green field. The background shows a line of trees and a cloudy sky. The text is overlaid on the right side of the image.

ORGANIC IS A HOLISTIC SYSTEM OF PRODUCTION

CULTURAL, MECHANICAL, BIOLOGICAL CONTROLS

CROP ROTATION

COVER CROPPING

CULTIVATION & TILLAGE

INTEGRATED PEST MANAGEMENT

POLLINATOR HABITAT

RELEASE OF BENEFICIALS

APPROVED INPUTS

OEFFA APPROVED PRODUCTS LIST

WSDA APPROVED PRODUCTS LIST

OMRI LISTED MATERIALS

MANURE AND COMPOST

ALLOWED & PROHIBITED SUBSTANCES, METHODS, INGREDIENTS

- **GENERAL RULE:** SYNTHETIC SUBSTANCES NOT ALLOWED, NONSYNTHETICS ALLOWED (*except for materials on the national list of approved substances*)
- **NOT ALLOWED: THE BIG 3**
 - GMOS
 - IONIZING RADIATION
 - SEWAGE SLUDGE



4) DO I NEED TO USE
ORGANIC SEED
DURING TRANSITION?



SEED DURING TRANSITION

- **FIRST TWO YEARS OF TRANSITION**
 - UNTREATED, NON-GMO SEED
 - KEEP INVOICES, RECORDS
- **FALL GOING INTO YEAR YOU'RE APPLYING FOR ORGANIC CERTIFICATION**
 - **SEARCH** FOR ORGANIC SEED
 - IF YOU CANNOT FIND WHAT YOU WANT IN QUALITY/QUANTITY/FORM
 - **DOCUMENT** YOUR SEARCH
 - USE UNTREATED, NON-GMO SEED
 - KEEP INVOICES, RECORDS
- **TRIAL** A SIMILAR ORGANIC VARIETY
 - USING ORGANIC SEED SUPPORTS FELLOW ORGANIC FARMERS.

5) HOW BIG
DOES MY BUFFER
NEED TO BE?

**BUFFERS NEED TO
BE “ADEQUATE TO
PREVENT
CONTAMINATION”**

FACTORS TO CONSIDER:

ADJOINING LAND USE

CROP PLANS

WIND PATTERNS

**SLOPE AND WATER
FLOW**

USE COMMON SENSE.

BE CONSERVATIVE.

6) WHAT
RECORDS DO I
NEED TO KEEP?

RECORDKEEPING

USE YOUR RECORDS TO IMPROVE YOUR BUSINESS. USE YOUR TRANSITION TO FIGURE OUT A RECORDKEEPING SYSTEM THAT WILL WORK FOR YOU.

- RECORDS CAN BE:
 - ON PAPER
 - DIGITAL
- RECORDS MUST BE:
 - AUDITABLE
 - ABLE TO DESCRIBE DAILY WORK ON THE FARM

RECORDKEEPING

FIELD ACTIVITY

STORAGE

SALES

EQUIPMENT CLEANING

TRACEABILITY- KEEP THE CHAIN!

- Trace the end product to its origin with a paper train.
- Documentation for organic seeds (or seed searches), approved fertility inputs,

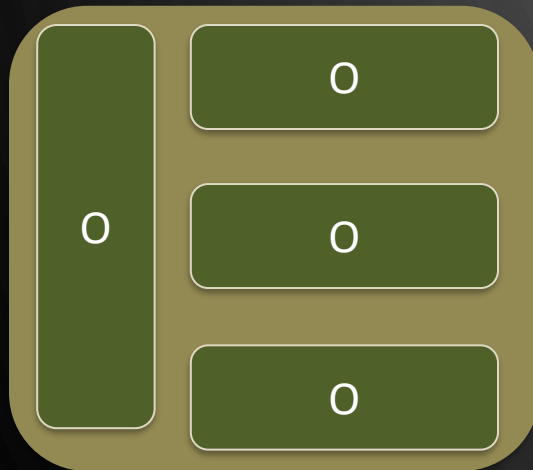
MASS BALANCE- DO THE MATH!

- Record quantities so math can be done from seed to sale.

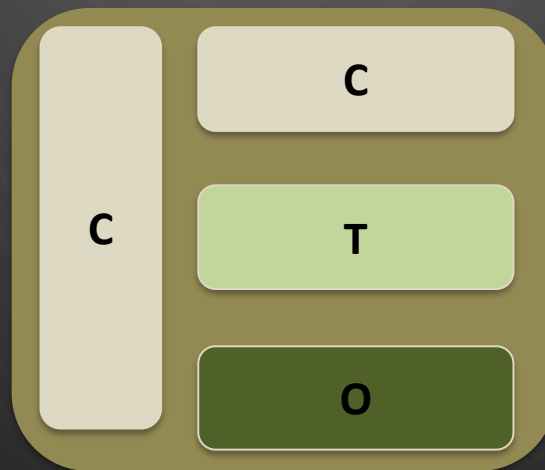
7) CAN I DO BOTH
ORGANIC AND NON-
ORGANIC PRODUCTION
ON THE SAME FARM?

YES, ORGANIC AND NON-ORGANIC PRODUCTION CAN BE ON THE SAME FARM.

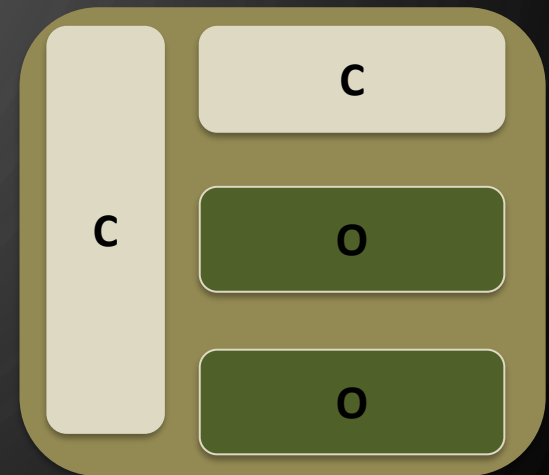
Full



Gradual



Split / Parallel



conventional

C

organic

O

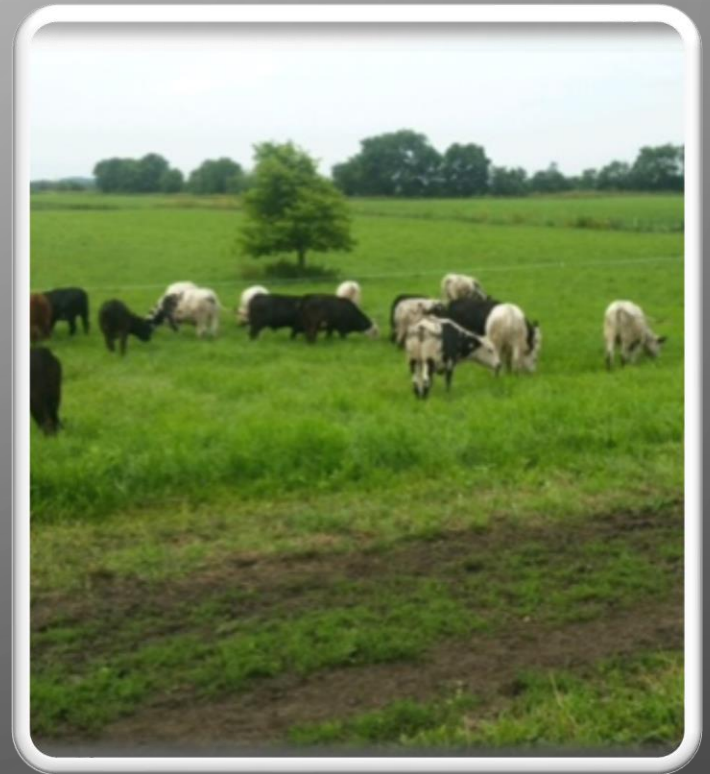
transitional

T

(Bowell, 2018)

THINGS TO CONSIDER IF DOING BOTH ORGANIC AND NON-ORGANIC PRODUCTION:

- EQUIPMENT CLEANING
 - STANDARD OPERATING PROCEDURE
 - DOCUMENTATION
- BUFFER ZONES
- STORING AND LABELING INPUTS SEPARATELY
- STORING AND LABELING PRODUCTS SEPARATELY



8) CAN I CERTIFY
RENTED LAND?

YES, RENTED LAND CAN BE CERTIFIED ORGANIC.

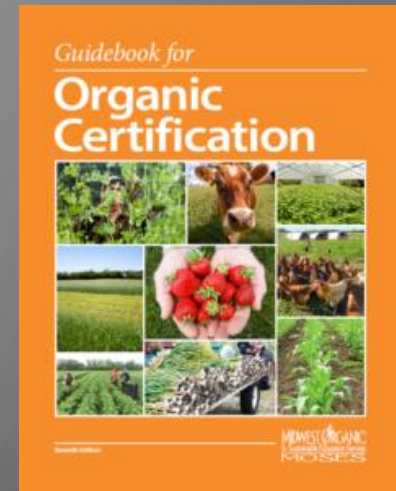
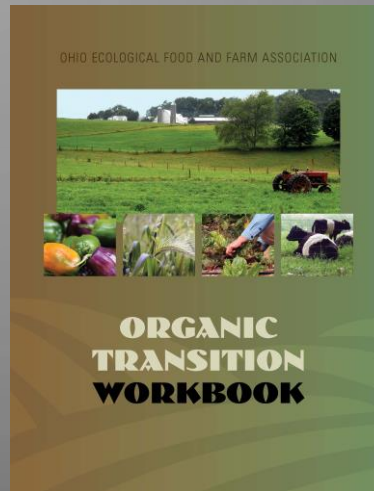
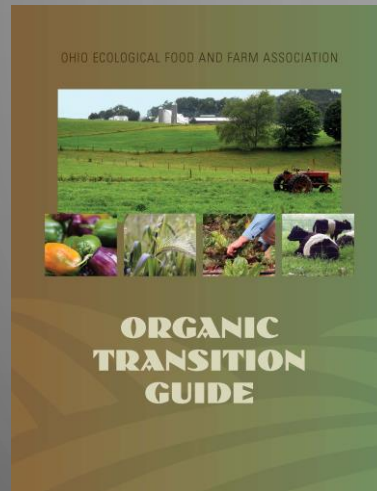
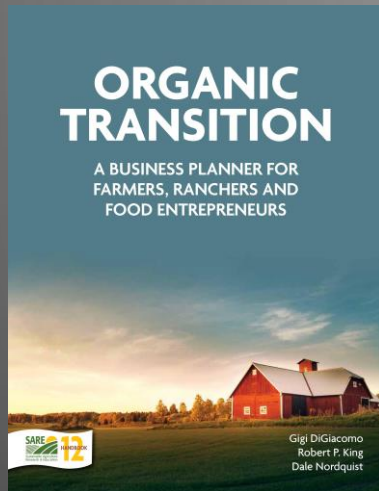
- PRIOR LAND USE
DOCUMENTATION
(SAMPLE FORM)
- STRONG
COMMUNICATION
WITH THE LAND
OWNER





HELP AND RESOURCES

9) HOW DO I LEARN
THE ORGANIC
STANDARDS?



SELF-STUDY FROM MENTORS OEFFA STAFF



TRANSITION TOGETHER: WE CAN HELP!

TRANSITIONAL AND ORGANIC ON-
DEMAND PHONE SUPPORT

FACT SHEETS

CERTIFICATION SERVICES

INPUT REVIEW

SAMPLE RECORDKEEPING
DOCUMENTS

ORGANIC POLICY INFO &
OPPORTUNITIES

ANNUAL FARM TOURS &
WORKSHOPS

OEFFA CONFERENCE

**GRAIN GROWERS CHAPTER &
ORGANIC TALK!**



HAVE OTHER IDEAS OR CHALLENGES? WE WANT TO KNOW!

- FARM BILL WORK GROUPS
- CROP INSURANCE WORK GROUP
- ORGANIC WORK GROUP
- ENERGY INFRASTRUCTURE
- FARMER-RESEARCHER NETWORK (WITH FARMERS, OSU & CSU!)



10) WHAT SUPPORT IS OUT
THERE FOR TRANSITION?

CLIMATE SMART AGRICULTURE FUNDING OEFFA AS PART OF MIDWEST ORGANIC COLLABORATIVE TO SUPPORT TRANSITIONAL GRAIN GROWERS

- COHORT OF TRANSITIONING OPERATORS
- MENTORSHIP WITH EXPERIENCED ORGANIC FARMERS
- PLANNING FOR TRANSITION
- DESIGNING A ROBUST ROTATION
- MARKETING THE WHOLE ROTATION
- MONITORING SOIL HEALTH, WATER QUALITY, BIODIVERSITY

USDA SPENDING \$300 MILLION ON ORGANIC TRANSITION

- \$100 MILLION FOR THE TRANSITION TO ORGANIC PARTNERSHIP PROGRAM
- \$100 MILLION SPLIT BETWEEN NRCS AND FSA IN SUPPORT OF TRANSITIONAL AND ORGANIC GROWERS
- \$100 MILLION TO IMPROVE ORGANIC MARKETS



Guide to State Shading:

High	# of Organic Operations	Low
Dark Green	Medium Green	Light Green

USDA is an equal opportunity employer, provider and lender

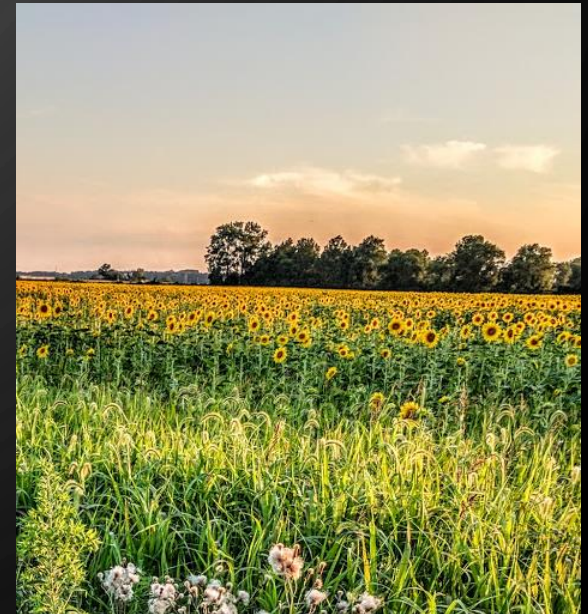
- TECHNICAL ASSISTANCE
- NETWORKS
- FARMER-TO-FARMER MENTORSHIP
- FIELD DAYS

DIRECT FARMER ASSISTANCE THROUGH NRCS AND RMA

- **PREMIUM SUPPORT FOR TRANSITIONAL AND ORGANIC GROWERS** UTILIZING CROP INSURANCE WILL BE OFFERED THROUGH RMA'S TRANSITIONAL AND ORGANIC GROWER ASSISTANCE PROGRAM (TOGA)
- NRCS WILL OFFER FINANCIAL ASSISTANCE TO FARMERS IMPLEMENTING A NEW **ORGANIC MANAGEMENT CONSERVATION PRACTICE STANDARD**
- NRCS WILL **UTILIZE EXISTING PRACTICE STANDARDS TO SUPPORT TRANSITIONING OPERATORS AND INCREASE ORGANIC KNOWLEDGE** AMONG NRCS STAFF
 - TRANSITION PLANNING- CAP-138
 - COVER CROPPING DURING TRANSITION- EQIP
 - BUFFER ESTABLISHMENT-EQIP – ORGANIC INITIATIVE
 - ONGOING GOOD NATURAL RESOURCE MANAGEMENT PRACTICES- CONSERVATION STEWARDSHIP PROGRAM

ORGANIC MARKET DEVELOPMENT

- MARKET ACCESS FOR THE WHOLE ROTATION
- STORAGE AND PROCESSING INFRASTRUCTURE
- AVAILABILITY OF CERTAIN INGREDIENTS





IN SUMMARY



GET STARTED!

- BUILD A RELATIONSHIP WITH A CERTIFIER
- FIND A MENTOR!/ FIND YOUR COMMUNITY!
- **STUDY** THE ORGANIC STANDARDS
- DEVELOP A RECORDKEEPING SYSTEM
- MAKE A TRANSITION PLAN
- UTILIZE RESOURCES TO HELP YOU!



JOHN STOCK



CASEY BROOKS



JOHNNIE SPEICHER



JULIA BARTON



LAUREN HIRTLE



HALEY BEHNFELDT

WE ARE HERE TO HELP YOU
THROUGH YOUR TRANSITION.

614-421-2022

Julia Barton
Organic Policy Specialist
614.359.3180
julia@oeffa.org

